

**Volume 35 issue 407**

**September 2023**

# LAKE SHORE HOG<sup>TM</sup>

**Monthly Newsletter**



# Whats Happening

## Monthly Meeting

September 17, 2023

9:00 am Breakfast

10:00am Meeting

Magnolia Café Lambs Farm

## Upcoming Rides and Activities

Sep. 2- Hidden Valleys of New Glarus- John/ George

Sep. 9- New Glarus for Lunch- Manny

Sep. 10- Howard Runge's Rivet Ride- Multiple

Sep. 16- 12th Annual Baby Butt- Dave/ George

Sep. 17 Meeting and After Meeting Ride

Sep. 21- WWDC #9 Firehouse- Dave

Sep. 30- 8th Annual Edwards Apple Orchard-Doug W/Scott

[Click here for more information on upcoming rides and activities](#)





**Heather Johnston**

**Director**

September already? Wow. It was just the 4th of July, I swear. Ah, well time flies when you're having fun!

This heat wave sure was a trip, huh? Felt like being in a steam room... thankfully it is cooling down. I don't know about you, but riding in the cooler weather is my favorite.

I love to be able to enjoy the sunshine but have long sleeves on and not be hot.

Fall is just around the corner, and we have plenty of time to enjoy the open road together. Soon we will have color change in the leaves and crisp autumn air.

For now, let's be thankful for the summer sun and our Chapter family. I hope to see you on a ride soon!

Until next time,

Heather "Bling" Johnston

**Director**

[director@lakeshorehog.com](mailto:director@lakeshorehog.com)

217-317-0384



## **Doug Wrobel**

### **Assistant Director**

Well, hello again. Sure was nice seeing everyone at the monthly meeting. Can someone please explain to me where the time has gone. Hard to believe that it's almost the first of September already. I know some of you are already thinking of putting your bikes up for the winter. Some of us are still thinking about the fall colors that will soon be upon us. I know that being out and about that I've started to see the Maples starting to change.

With that being said, remember, as the leaves start to change they will also start to fall. They will start to collect and the moisture will be under them. So we will have to pay attention even more to our riding. I know this may seem a little early to talk about, but we need to start thinking about it.

Now that all the big events are over with, I hope everyone who attended any of them had a great time.

For now, Ride Safe.

Doug W



**Rick Cruz**

**Treasurer**

The Chapter finances are still solvent. Rick has nothing special to share this month.

Rick Cruz  
**Treasurer/Road Captain**  
[treasurer@lakeshorehog.com](mailto:treasurer@lakeshorehog.com)



## **Colleen Hancock**

### **Secretary**

Nothing to share this month



**Nita Cruz**

**Activities**

Hard to believe the riding season is nearing the end, seems like just 5-months ago we were just starting. Don't let this get you down, as we are looking to do a movie night in October as our Fall Event. More information will follow as we get the details ironed out. As of now, the date is October 14, we are looking to set this up at the Dealership and we will have some food, non-alcoholic beverages and a few fun raffle prizes to give away.

Nita Cruz  
**Activities**

[activites\\_nita@lakeshorehog.com](mailto:activites_nita@lakeshorehog.com)





## **Roz Wrobel**

### **Membership**

Hey there from Membership

As I sit and write this news article, I realize that we are going into September and this year is speeding by. But there is still more riding to do and things to see. Fall is the best time to see the color changes and there are a lot of places to see them. So get out there and ride and enjoy the scenery.

We have one new member this month, so please welcome Jack Leiske to our family. If you see Jack, please say hello and welcome. There are still so many activities to attend and our activities officer has some great ones coming up. Hope to see everyone at the next event.

Please remember to keep your national H.O.G. current. If it should expire, your membership with the chapter becomes inactive until your national H.O.G. is current. This can be easily done by logging on [www.hog.com](http://www.hog.com). I will also send an email or text if no email if it has expired. I check several times a month, please make sure that I have your current email address.

Roz Wrobel  
aka" Muffin"  
Membership Officer/Volunteer Coordinator  
[membership@lakeshorehog.com](mailto:membership@lakeshorehog.com)





## John R. Sweeney Jr

### Head Road Captain/ Webmaster

Howdy everyone,

It was great to see so many people that came out to help celebrate the life of our friend and brother Doug Okeefe. He did so much for our chapter as a member, Road Captain, Safety Officer, Activities Officer and Assistant Director.

He created and planned out all of the "Beach Bashes", organized an assortment of parties and events and most importantly, made us laugh with some of the craziest Safety meetings we have ever had. Doug knew how to create and have a fun time. He will be forever missed.

When his rivet is ready, will have our traditional Memorial Ride for the viewing at the museum, most likely next spring.

Doug Okeefe R.I.P.  
08/24/1954  
02/14/2023

Till next month...

**John R. Sweeney Jr.**  
aka (Motor Mouth)

"Remember, shiny side up and rubber side down..."

**Head Road Captain**

[HeadRoadCaptain@lakeshorehog.com](mailto:HeadRoadCaptain@lakeshorehog.com)

(847) 651-4469 (Cell) — (847) 882-0187 (Home)





# Teddy Bear Corner

Howdy folks,

If you would like to donate socks and/or undies for the kids, all sizes are needed from toddler to teenager.

We currently have plenty of the sizes listed below, but accept any size you want to give.

Girls undies = sizes 10,12,14

Boy undies = sizes 6 - 8 , 10 - 12

Boys socks = 6 months to 12 months

Boys socks = 13c 4yrs

Till next time,

Sammie Sweeney

**Teddy Bear Coordinator**

[jr.sweeney@comcast.net](mailto:jr.sweeney@comcast.net)

(847) 882-0187





## **Joe Murglin**

### **Safety Officer**

All of the stories I've written up to this point have been from the perspective of the motorcyclist. This time is a little different, I was actually riding a bicycle. I learned first hand not only how important it is for an operator of a motor vehicle (car, motorcycle, etc.) to be situationally aware of the traffic situation, but also for a bicyclist. This past Monday during the morning rush hour I set out for my daily bicycle workout. Unfortunately for me, I didn't get too far before getting hit by a car! I was OK, but my brand-new bike sustained some minor damage. I was at an intersection just starting to cross when a driver (in a car) decided to roll a right hand on red while looking to the left. Luckily, she slowed down enough so she was able to brake when she made contact with the front of my bike and my left leg.

So, there's a couple of points here that I want to make. First, as I'm sure you know by now, when out on a ride it's critical to be aware of your surroundings and take action as required whether it's reducing your speed, proper lane positioning, etc. Second be aware when out for a walk or (especially) bicycle ride with your family or friends because most drivers are probably on their cell phone or their minds are in a cloud. I can't say it enough, and you've probably heard it a million times, but for goodness sake assume everyone out there is an idiot and keep your head on a swivel!



## **Sherrie Bransky**

### **Ladies of Harley**

Nothing to share this month

Sherrie Bransky  
**Ladies of Harley**

[loh\\_sherrie@lakeshorehog.com](mailto:loh_sherrie@lakeshorehog.com)





## George Lang

### Historian

## Blue Star Memorial Highways

by

**Richard F. Weingroff** The Blue Star Memorial Highways are a tribute to the armed forces that have defended the United States of America. The National Garden Clubs, Inc., is the parent organization for Blue Star Memorial Highways. The idea dates to 1944 when the New Jersey State Council of Garden Clubs beautified a 5½-mile stretch of U.S. 22 from Mountainside to North Plainfield. Approximately 8,000 dogwood trees were planted as a living memorial to the men and women in the Armed Forces from New Jersey. The Blue Star, taken from the blue star in the service flag, was chosen to symbolize the memorial because it was used during World War II on flags and homes of families that had a son or daughter in the service. The New Jersey Legislature approved a Joint Resolution on January 22, 1945, designating this highway "Blue Star Drive."

An [article in the September 1946 issue of \*Contractors and Engineers Monthly\*](#) described the planting project:

**DOGWOOD PLANTED ALONG ROADSIDES** Blue Star Drive Planned as Memorial for Service People; Slopes Flattened or Stabilized With Trees

Living tribute to service men and women of New Jersey advanced further this spring when over 6,000 flowering-dogwood trees were planted along U.S. 22, important east-west cross-state highway. Two sections of the artery, known as the Blue Star Drive, have been selected as a permanent memorial. But eventually, as many dogwoods will line the four-lane highway as there were men and women from New Jersey in the armed forces during World War II. Most of the planting has been done on a 5½-mile stretch between North Plainfield, Somerset County, and Mountainside, Union County. At this location, U.S. 22, or State Route 29, is somewhat west of the commercialized and industrialized east side of the state. So the natural beauty of the countryside is being enhanced by roadside planting. The project is sponsored by the Garden Club of New Jersey, which has collected the funds to purchase the trees. The work of selecting, planting, and maintaining them is being carried on by the New Jersey State Highway Department. The Department has also flattened many backslopes along the road. Where lack of the necessary space interfered, the Department has stabilized the slopes by planting young trees to check erosion and slides.



**Blue Star Memorial Drive** The start or northeast end of the Blue Star Drive in Mountainside is at the Locust Grove Union Chapel. There a roadside sign has been erected to signify its dedication. Completed in 1932, the route has dual concrete roadways, each 20 feet wide, with 10-foot shoulders on the outside that have a slope of ¼ inch to the foot. A system of catch basins along the ditch line provides adequate drainage. The dual roads are separated by a planted area that varies in width according to the right-of-way available. However, the average right-of-way width is only 100 feet. This means that the roadside strip beyond the shoulder on each side is only about 10 feet wide. So in order to have adequate space for planting, the State sought permission from owners of abutting property to put dogwoods on their land. strings attached to the benefit . . . Although the floral emblem of New Jersey is the violet, the *Cornus florida* or white flowering dogwood was chosen to be featured on the Blue Star Drive because it is the state's most beautiful native tree. Its large white blossoms in the spring, and its foliage and clustered red berries in the autumn, give it two full seasons of spectacular display. In addition to the dogwood, and acting as a background for it,

other trees such as native scarlet and red oak, white pine, and hemlock were also planted, along with flowering native shrubbery. The project really started in the autumn of 1944 when about 2,000 dogwoods were planted along this road. Those trees, as well as the ones planted this year, were purchased with funds raised by the Garden Club of New Jersey from donations by corporations, organizations, clubs, and public-spirited individuals. All future trees will be purchased in the same way. A 5-foot nursery-grown tree can be planted on Blue Star Drive for approximately \$1. A donation which does not specify the exact number of trees is used to plant an area with trees and shrubs of varying size to fit a landscape design. As this four-lane highway is one of the great traffic arteries between New Jersey and other states, it is estimated that 29,000 cars will pass the memorial daily . . . .

A short history of the Blue Star Memorial Highways by the National Garden Clubs explains how the idea became a national program:

At the close of World War II, the National Council, like other public-spirited groups, was seeking a suitable means of honoring servicemen and women. It was agreed, that as Garden Clubs, it would be better to help beautify and preserve the country the men had fought for than to build stone monuments. The New Jersey clubs had just finished beautifying a section of one of the New Jersey highways as a War Memorial, working with the New Jersey Highway Commissioner, Spencer Miller, Jr., when Mr. Miller, a guest speaker at the annual convention of the National Council in 1945, suggested that this program be projected on a nationwide basis. This was just the kind of project the National Council had been looking for.

Using the New Jersey project as its model, the National Council made a study of the inter-regional highways of the United States. A Blue Star Highway system was outlined, consisting of one east-west and seven north-south highways. (Today we have many more.) Highway Commissioners were informed of the plan as were also the Garden Clubs in each state, and all were invited to participate. Every State President was asked to secure collaboration of the State Highway Department before undertaking a Blue Star project, as this was considered requisite to the success of the plan. A uniform marker was adopted to show memorialization, the design of which was a gift from Mrs. Frederic Kellogg, founder of National Council. The history makes clear that the goal went beyond placing markers, "The project was organized as a demonstration of roadside beautification, to show what could be accomplished through united strength, as a protest against billboards, to educate the public to higher standards of roadside development, and to determine how the National Council could best work with the civil authorities for major achievement." In a 1948 address, Mrs. Vance Hood of Boonton, New Jersey, the first Chairman of the program, explained:

National Council has emphasized memorialization during this early stage [but] designation of the highway is only the beginning. Outline of a general beautification program through memorial plantings of native trees and shrubs, special features such as roadside rests, bird sanctuaries, playgrounds and through the elimination of blighted areas, has been prepared . . . . We urge strong protective measures also, through planning, zoning, and voluntary cooperation in improving roadside standards. The Blue Star Memorial Highway should serve as a demonstration area for ALL approved practices in Conservation, Horticulture, Safety and other fields of Garden Club interest . . . . But if we fail of full realization, we can at least go forward with the knowledge, to quote New Jersey State Highway Commissioner, Spencer Miller, Jr., "that we are helping to redeem our times and to build a civilization which is fit for free men, for we shall be helping to build America the beautiful."

The original concept was expanded to honor all men and women who had served, were serving, or would serve in the armed services of the United States. According to the Blue Star Memorial Program website, "Memorial Markers and By-Way markers were added to the Highway Markers, to be used at locations such as National cemeteries, parks, veteran's facilities and gardens.





## **Bob Morrison**

### **Photographer**

Hello Sisters and Brothers,  
Here are some pictures from our August meeting:





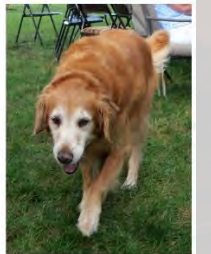


Pictures from the Celebration of Doug Okeefe's Life:















## Past and present Directors of Lake Shore H.O.G. Chapter:



## Group shot from the Celebration of Doug Okeefe's Life:



See you next month,

Bob

Bob Morrison

**Photographer**

[photographer@lakeshorehog.com](mailto:photographer@lakeshorehog.com)





## Corey A. Johnston

### Editor

#### Fishing in the Sea of Cortez, Baja California, Mexico September 2021 By Tom Babich

I like fishing. I have fished throughout Illinois, Wisconsin, and Florida. Taken numerous wilderness trips fishing in Ontario, Canada. I did a little saltwater fishing between the two main islands of New Zealand. I have even caught many piranhas and peacock bass in the Amazon River basin of Peru. But I had always wanted to fish in the Sea of Cortez. Why not combine that with a motorcycle trip? First was to prepare my 2018 Street Glide Anniversary motorcycle. I brought it into Lakeshore Harley-Davidson for its 20K service and new tires. I ran into Cory who was dropping off his 2018 Road Glide for its 60K service. Boy, do I need to ride more. On September 7th I took off from Wauconda, IL on my solo trip. My motorcycle is packed with clothes, tools, first aid kit and camping gear. It all fits nicely with the King Tour Pack that I added. As I headed west towards the Mississippi River there was a huge vertical band of intense rain and thunderstorms moving from north to south. Many times, I think that I have it beat and can head west without getting wet, only to backtrack, move farther south and try moving west again. After a few attempts I make it pass the storm nice and dry. That was to be the last rain I was to encounter on the entire trip.



Taking my time, I make my way through Iowa, Missouri and into Kansas where I visit the geographical center of the continental United States.

Next is Colorado, crossing the Rocky Mountains from Denver. I rode the Million Dollar Highway from Ouray to Silverton. Great views, but not the best places to

pull off and get pictures. Then Utah and Monument Valley, into Arizona.

What a sight. A stop in Phoenix to visit my cousins. The ride down to Yuma was the hardest part of the journey. It was HOT! At one point I had stopped at this gas station that had a three foot long, old fashion mercury thermometer mounted on the outside wall. The mercury was maxed out at 120 degrees. I took lots of stops



and lots of fluids. After a night in an Air BnB outside of Yuma, I set off into California to cross the border into Los Algodones, Mexico. This is a very quiet place to cross. Los Algodones is a small town that caters to Americans who park their car and walk across to purchase prescription drugs, get dental work done and buy eyeglasses. The numerous offices are very professional, English speaking and a fraction of the cost of here at home.





Mexico does not have the best traffic signs, but you can make your way around. Be aware that a speed bump can pop up anywhere. The navigation maps on the Street Glide would work, but the GPS directions were not



completely accurate in the smaller towns. I continued south to the seaside town of San Felipe. There I rented a room at the La Hacienda de la Langosta Roja. It was a nice enough place right



downtown, and they had a guard that would watch the vehicles in their parking lot all night long. I was able to hire a boat with Meza's Sport Fishing. Jose was a wonderful guide and person. He spoke perfect English



and knew where the fish were. We caught Sierra Mackerel, Parrot fish, Grouper and Trigger fish. I took some of the fish to The Taco Factory Cantina and Ristorante. There they cooked up my fish. They sautéed the grouper, deep fried the Parrot Fish, and use the Trigger fish to make ceviche. It was two very large plates with tortillas and lots of condiments for only seven US dollars. I shared some of the huge plate of ceviche with an American couple and he bought me a cerveza. Eating is cheap and good in Mexico. The next morning, I took off back north crossing into California. From there it was back into Arizona, through Las Vegas, then Utah for some National Parks. I visited Zion, Bryce Canyon, and Arches (my favorite to ride through). In Colorado it was a visit to Mesa Verde National Park. In New Mexico I rode most of the Enchanted Circle stopping to visit the Vietnam Veterans Memorial in Angel Fire. It was created by a father and mother to honor their son and the sixteen



men that died with him near Con Thien, South Vietnam on May 22, 1968. The memorial has been expanding ever since. If you are in the area, I suggest stopping by.





Next is east through the Texas panhandle into Oklahoma where I had my 25K Service completed by Fort Thunder Harley-Davidson in Moore, OK. I was very pleased with their service. Then came my favorite ride of the trip. Yes, it was in Oklahoma. The Talimena Scenic Byway. Fifty miles riding a ridge, lots of vistas pull off on each side of the road. The road is in excellent shape, very little traffic and no stop sign for fifty miles. You can get off in the middle of it and I did, throwing up my tent at Gibby's Biker Camp. Enjoyed tacos and a live band with a club from Texas and a few other riders. Gibby even rode his ATV up to my tent in the morning to deliver homemade breakfast biscuit sandwich.



Then on to Arkansas and riding The Pig Trail. Into Mississippi to join The Natchez Trace Parkway. Followed that north for a while into Alabama, then Tennessee. Start head back northwest into Kentucky and back into Illinois. See the Superman statue in Metropolis. But one last stop in St. Louis to visit another cousin. From there it was back home safe and sound.

26 Days

6,342 Miles

50 fuel stops

\$580.34 in fuel

Stayed with relatives. in motels, hotels, camping, and Air BnB

**Thanks Tom for the article submission.**

**Don't Forget you can tell your stories too  
just email me**

**@drcjohnston40@hotmail.com**

Corey (Rain Man) Johnston  
"Listen to the wind, it talks..."  
**Editor/RC**

**217-259-3112**



## Primary Officers



**Director**  
Heather Johnston  
217-317-0384  
[Director@LakeShoreHOG.com](mailto:Director@LakeShoreHOG.com)



**Treasurer**  
Richard (Rick) Cruz  
847-693-6527  
[Treasurer@LakeShoreHOG.com](mailto:Treasurer@LakeShoreHOG.com)



**Assistant Director**  
Doug Wrobel  
224-627-3987  
[AsstDirector@LakeShoreHOG.com](mailto:AsstDirector@LakeShoreHOG.com)



**Secretary**  
Colleen Hancock  
847-997-5542  
[Secretary@LakeShoreHOG.com](mailto:Secretary@LakeShoreHOG.com)

## Discretionary Officers



**Activites**  
Nita Cruz  
[loh\\_nita@LakeShoreHOG.com](mailto:loh_nita@LakeShoreHOG.com)



**Ladies of Harley**  
Sherrie Bransky  
[loh\\_sherrie@LakeShoreHOG.com](mailto:loh_sherrie@LakeShoreHOG.com)



**Historian**  
George Lang  
[Historian@LakeShoreHOG.com](mailto:Historian@LakeShoreHOG.com)



**Head Road Captain/ Webmaster**  
John R (Motor Mouth) Sweeney Jr  
[HeadRoadCaptain@LakeShoreHOG.com](mailto:HeadRoadCaptain@LakeShoreHOG.com)



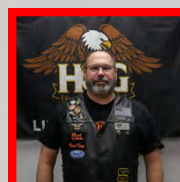
**Membership**  
Roz Wrobel  
[Membership@LakeShoreHOG.com](mailto:Membership@LakeShoreHOG.com)



**Officer at Large**  
Rich Faber  
[OfficeratLarge@LakeShoreHOG.com](mailto:OfficeratLarge@LakeShoreHOG.com)



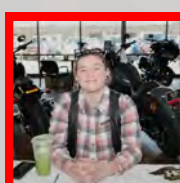
**Photographer**  
Bob Morrison  
[Photographer@LakeShoreHOG.com](mailto:Photographer@LakeShoreHOG.com)



**Safety Officer**  
Joe Murglin  
[Safety@LakeShoreHOG.com](mailto:Safety@LakeShoreHOG.com)



**Editor**  
Corey (Rain Man) Johnston  
[Editor@LakeShoreHOG.com](mailto:Editor@LakeShoreHOG.com)



**Chapter Products**  
Brittney Frye  
[Chapterproducts@LakeShoreHOG.com](mailto:Chapterproducts@LakeShoreHOG.com)